

# —Standard Valves—

SS 1971  
Valve

## SS 1971 VALVE

DOUBLE ENDED WATER COOLED TRIODE.

### SPECIFICATION.

#### Cathode.

Pure Tungsten filament.  
Constant voltage type.

#### Dimensions.

Net weight 7 lbs. (3,200 gms.)  
Overall length  $26\frac{1}{2}$ " (67.5 cms.)  
Bulb diameter  $3\frac{1}{2}$ " (8.9 cms.)

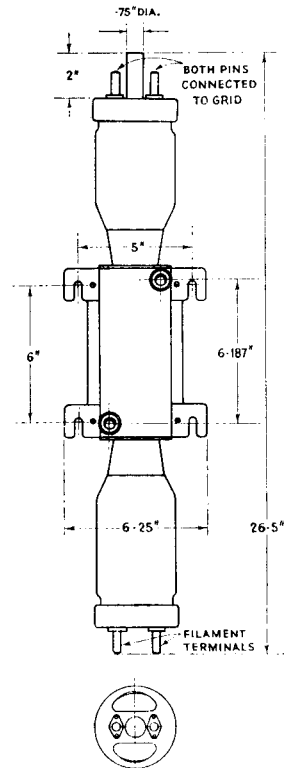
#### Water Flow.

5 gallons per minute.

#### Constants.

Filament voltage 19-21 volts  
(exact filament voltage marked  
on bulb).  
Nominal filament current 64 amps.  
Total emission 11 amps.  
\*Impedance 3,500 ohms  
\*Amplification factor 21  
Grid-anode capacity 20  $\mu\mu\text{F}$ .  
Anode-filament capacity 5.5  $\mu\mu\text{F}$ .  
Grid-filament capacity 8  $\mu\mu\text{F}$ .

\* at anode current of 1.0 amp.



### LIMITING CONDITIONS FOR SAFE OPERATION.

Maximum direct anode voltage	12,000 volts
Maximum direct anode voltage for anode modulation	9,000 volts
Maximum direct anode current	2.75 amps.
Maximum anode dissipation	15 Kw.
Maximum grid dissipation	250 watts
Maximum frequency for above ratings	15 Mc.
Anode voltage for frequency of 22 Mc.	10,000 volts

Note :—No water jacket required as it forms part of the valve.

V.1971-1  
Nov. 1937

# —Standard Valves—

## TYPICAL OPERATING CONDITIONS.

	Class B. A.F. Amp. For balanced 2 valve circuit.
Direct anode voltage Grid bias Direct anode current per valve—zero signal Direct anode current per valve—maximum signal Load resistance—anode to anode Maximum signal output—2 valves Anode dissipation	10,000 volts —250 to —350 volts 0.45 amps. 2.2 amps. 4,000 ohms. 24 Kw. 10 Kw.

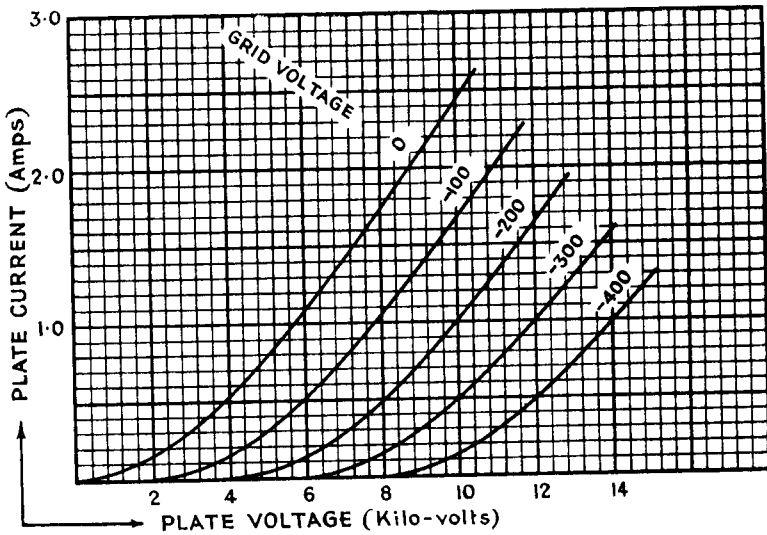
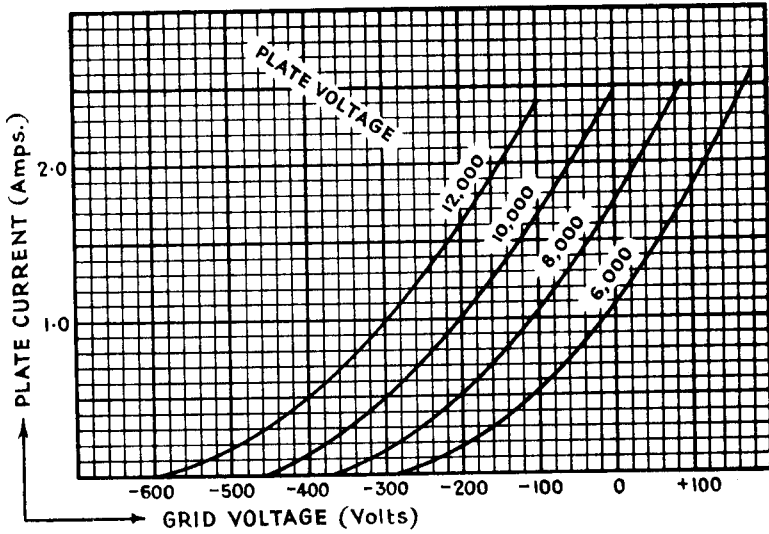
## RADIO FREQUENCY OPERATION.

	Class B Telephony	Class C Telephony	Class C Telegraphy
	Modulated Carrier applied to grid	Subject to anode modulation	Unmodulated
Direct anode voltage Direct anode current Grid bias	10,000 1.5 —400	7,000 1.5 —650	10,000 volts 3 amps. —900 to —1,300 volts
Anode dissipation Carrier output	10 5	3.5 7	10 Kw. 20 Kw.

# —Standard Valves—

SS 1971  
Valve

These curves are taken with A.C. filament heating, grid and anode voltages being referred to the centre point of the filament.



V.1971.2  
Nov. 1937

PRINTED IN  
ENGLAND